

Honda Foreman/Rubicon
MA11116



motoalliance

22000 Industrial Blvd
Rogers, MN 55374
866.527.7637



DENALI Plow Mount MA11116 Honda Foreman/Rubicon

Thank you for purchasing our DENALI plow mount. You now own a premium custom plow mount to allow you to use your plow with your ATV. Please note the following instructions and heed all warnings.

- Your ATV and/or plow system can cause death or injury, please use caution and common sense when operating your unit.
- Read your Plow Operator Manual, your Winch Operator Manual, and all warning labels before operating your ATV.
- Operate your ATV at a walking speed with the blade installed. Do not exceed 5 mph (8 km/h), even with the blade up.
- Do not operate the ATV on slopes greater than 10 degrees with the plow installed.
- Always lower the plow to the down position before leaving your ATV unattended.

SEVERE INJURY OR DEATH MAY RESULT IF YOU ARE NEGLIGENT.

Honda Foreman/Rubicon
MA11116



motoalliance

22000 Industrial Blvd
Rogers, MN 55374
866.527.7637

Please verify that all hardware and parts are included in your package.

Kit Contents:

Item Number	Description	Quantity
1	Plow Mount	1
2	5/16-18 x 1-1/8" x 1-3/4" U-bolt (42012)	1
3	5/16-18 x 1-3/8" x 2" U-bolt (42018)	2
4	5/16" Flat Washer	6
5	5/16-18 Lock Nut	6



CAUTION

- **Use extreme caution when drilling through the skid plate. Every effort has been made to ensure that the hole positions on the crossmember will not allow the drill bit to contact anything else on the bike. But variations in manufacturing and installation may change that.**
- **Keep away all hands and limbs that may be in the path of the rotating bit.**
- **Only drill through the skid plate and nothing else on the bike. Not doing so may seriously damage/injure the bike and operator.**
- **Failure to tighten the mounting bracket bolts may cause serious damage to your plow mount and bike. Be sure to tighten them snugly.**
-

Plow Mount Assembly:

1. Remove the four skid plate bolts, and remove the skid plate from the ATV, Figure 1.

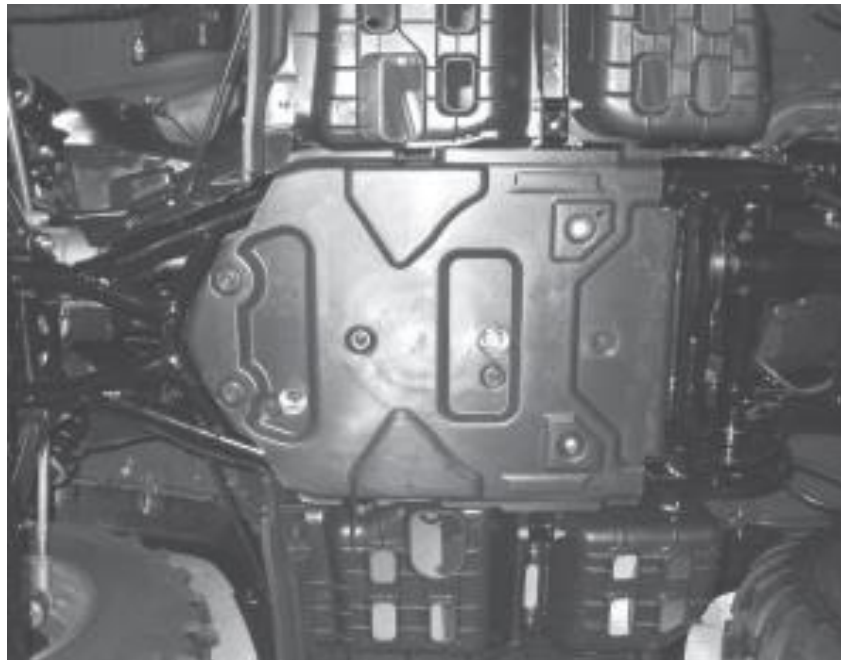


Figure 1

**Honda Foreman/Rubicon
MA11116**



motoalliance

22000 Industrial Blvd
Rogers, MN 55374
866.527.7637

2. Remove approximately a 1.0" by 0.5" piece from both sides of the skid plate using side cutting pliers or snips, Figure 2.

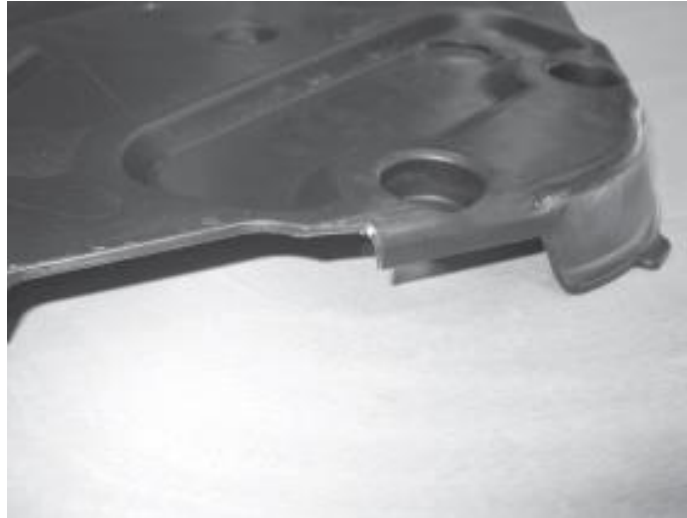


Figure 2

3. Place the u-bolts around the vehicle frame, Figure 3. The front of the skid plate must be pushed upward in order to slide the u-bolt around the frame member. Additional skid plate trimming may be necessary if there is any contact with the side u-bolts.

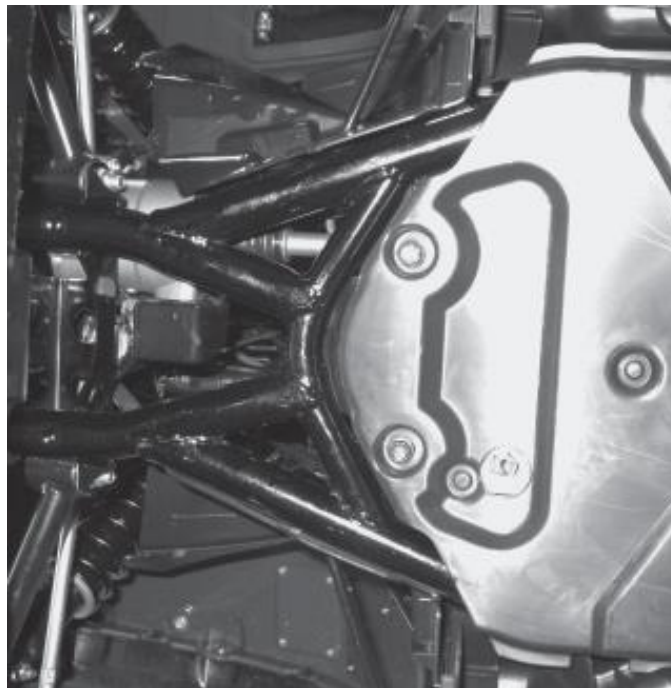


Figure 3



4. Fasten the plow mount plate to the ATV with the u-bolts, flat washers, and lock nuts, Figure 4. Align the plow mount plate with the ATV. Tighten the u-bolts uniformly to 10lb-ft.

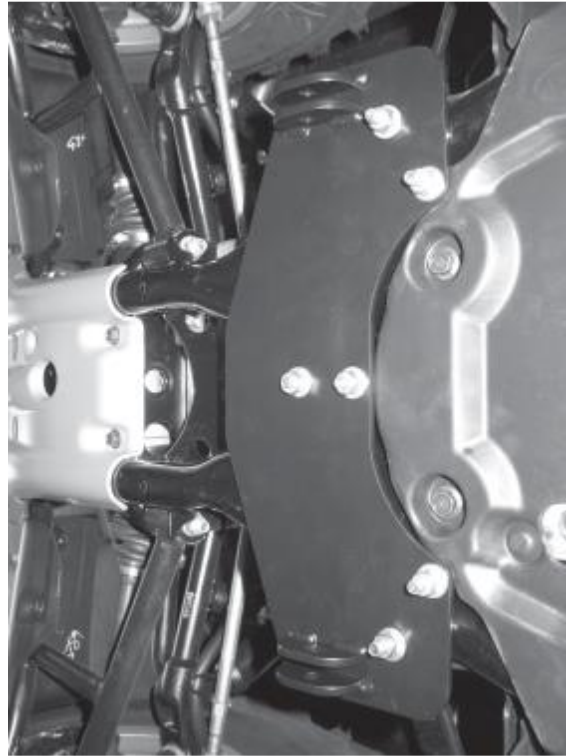


Figure 4

Plow Installation:

1. Slide the plow into position with the tubes under the ATV. Lift the end of the tube assembly into position so the holes in the tube wings line up with the 3/8” holes in the frame brackets (Figure 2).
2. A Phillips head screwdriver may be used to align the holes. Insert both 3/8” pins and hook the retaining clips on the ends of the pins to secure the plow to the ATV.
3. The plate should now be a permanent part of your ATV and will not interfere with clearance. The plow can be easily attached and detached on the welded u-bolt with the clevis hook on a winch or a manual lift assembly.

Plow mount installation is now complete.